



**M FORM**  
**ALUMINIUM FORMWORK**

**Redefining Excellence**



**MForm Technologies Pvt. Ltd.**



Established in 2019, with its Head Quarter in New Delhi, MFCC has evolved into a multidimensional organization offering path breaking solutions for the construction industry of India and its neighbor country Nepal as one stop shop for below verticals viz:

**M-Form:** Design & Manufacturing of Aluminium Formwork System

**M-Design:** Design of Formwork/Civil Structures

**M-Consult:** Formwork Consultancy & Training

**M-Project:** Management of Construction Projects

**M-Build:** Civil Constructions

## M-FORM ALUMINIUM FORMWORK SYSTEM

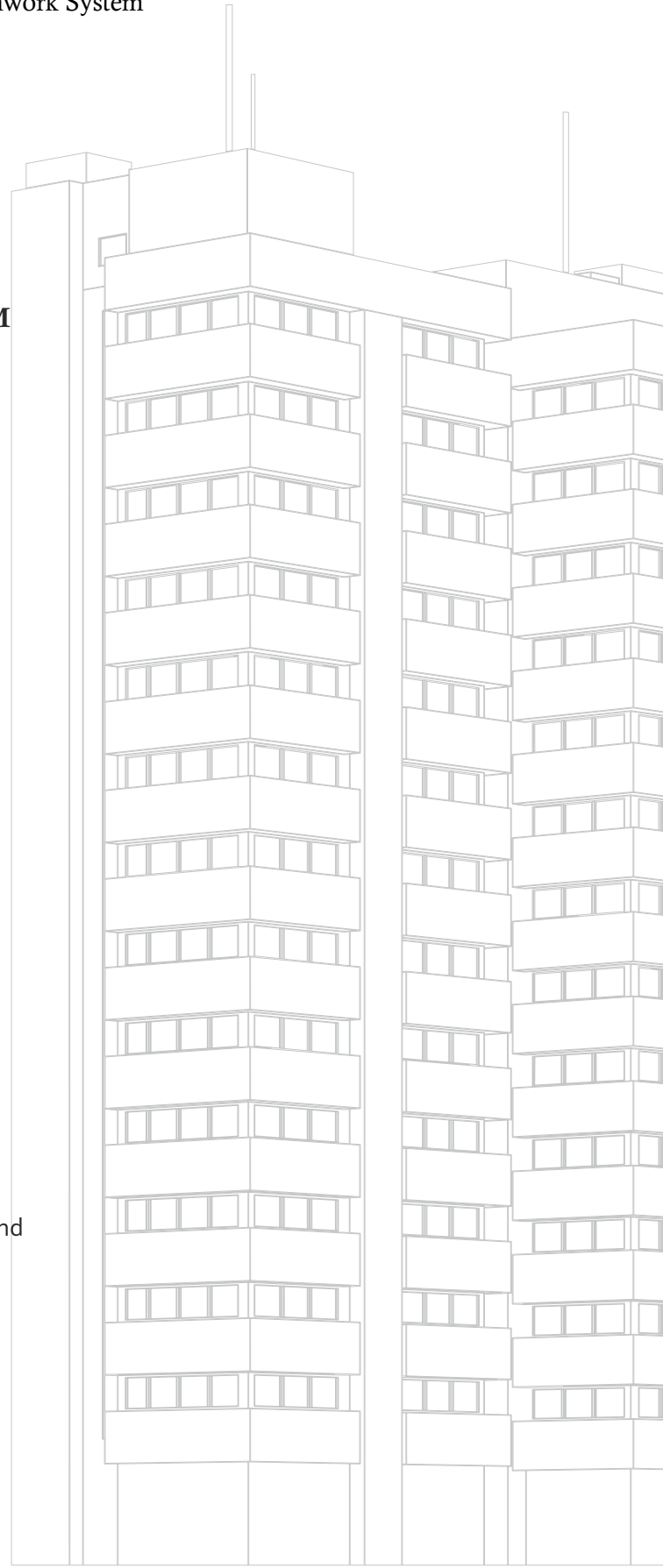
Designed to suite the structure of housing projects and manufactured from Extrusions of Structural Grade Aluminum Alloy T-6, 6061/6063 **M-Form**, is a complete solution for monolithic constructions.

## BENEFITS OF ALUMINIUM FORMWORK

- ✓ Faster cycles- reduced overhead
- ✓ Monolithic casting of all features of the structure viz slab, wall, beam, staircase, chajja, parapet, architectural, elevational features etc. etc
- ✓ No plaster needed,
- ✓ Scaffold integrated with the system
- ✓ Light weight, handheld system- Saving on crange
- ✓ Low forming cost due to high no. of repetitions
- ✓ Can be re-used in the next project with modification

## M-FORM ADVANTAGE

- ✓ Highly Experienced Project Planners, Designers and Site Engineers
- ✓ On time delivery
- ✓ Prompt After Sales Service
- ✓ Buy Back Policy
- ✓ Redesign, Modification for re-use in next project
- ✓ Accessories





New Kolkata Sangam, Serampore, West Bengal



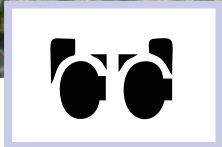
New Kolkata Sangam, Serampore, West Bengal



Sublimis, Gr. Noida West



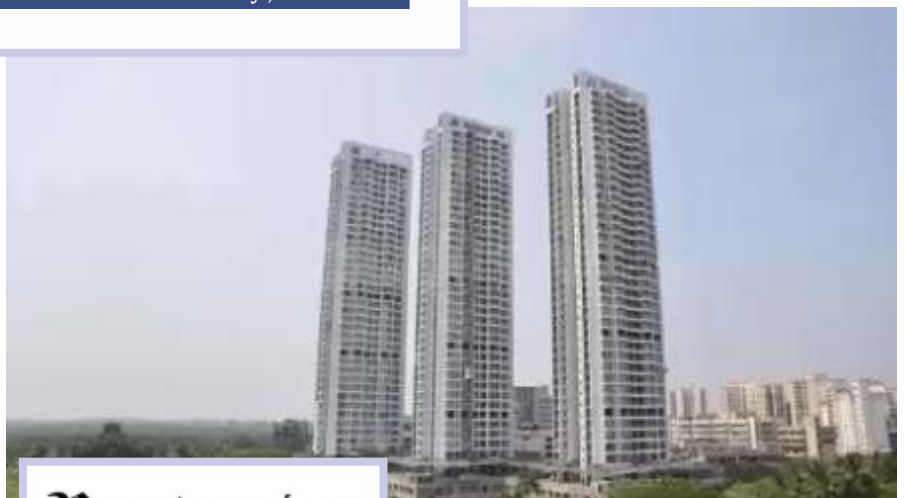
Rubrick Tripura, Hyderabad



The Botanika, Hyderabad



Windlass River Valley, Dehradun



Rustomjee Bella, Bhandup West, Mumbai



**PSM  
CONSTRUCTIONS**

Praneeth Pranav Solitaire, Hyderabad



Divyansh Onyx, Ghaziabad

## AFFORDABLE HOUSING



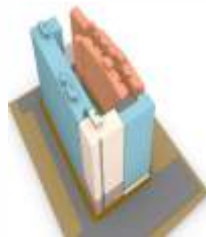
**SMART WORLD**  
Live. Work. Play.

DDJAY 89, Gurgaon, Haryana



*Bharat Nagar Housing*

Bharat Anthea, Agra



Diamond Rehab, Mumbai



HL City Group Housing, Bahadurgarh



Royal Casa, Coimbatore, Tamilnadu

## VILLA PROJECT

## INSTITUTIONAL BUILDING



M/S S S CHAUHAN & SONS

Hostel Building IIM Trichy, Tamilnadu

Laurus Synthesis

Your strategic partner for drug development from early phase development to commercial manufacturing.



SRR  
SRR Projects  
Private Limited

Laurus Synthesis R&D Centre, Hyderabad

## COMMERCIAL CENTRE & HOSPITAL BUILDING



OMAXE  
Toraing navaax nra naly

Omaxe Chandni Chowk, Delhi



BRAHMACORP

Brahmacorp Business Park, Pune



RICPL  
Engineers & Contractors

Siraspur Hospital CPWD, Delhi



FAIRFOX

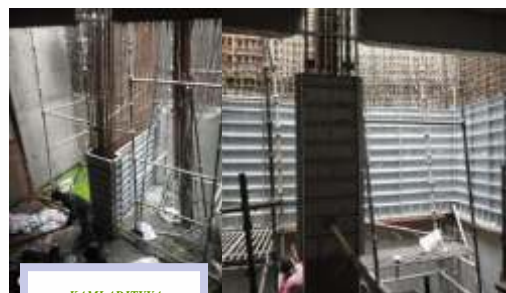
Fairfox EON Commercial Park, NOIDA

## INFRA PROJECTS



ORR

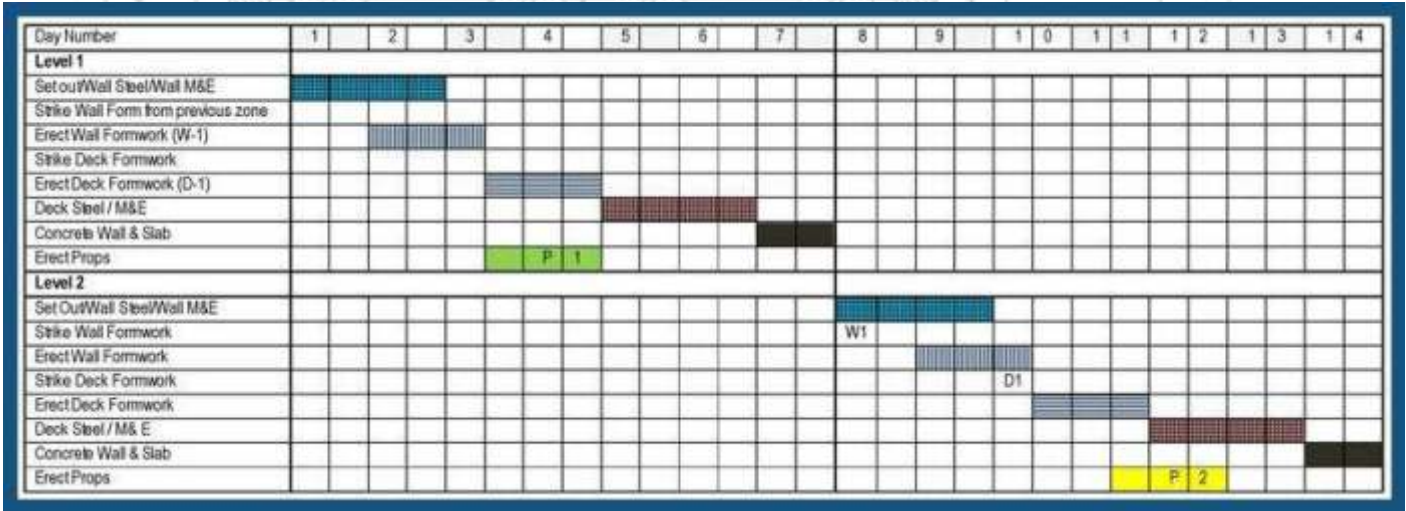
Retaining Wall, NHAI, Jodhpur



KAMLADITYA  
CONSTRUCTION PVT. LTD

CRPF Head Quarter, Delhi

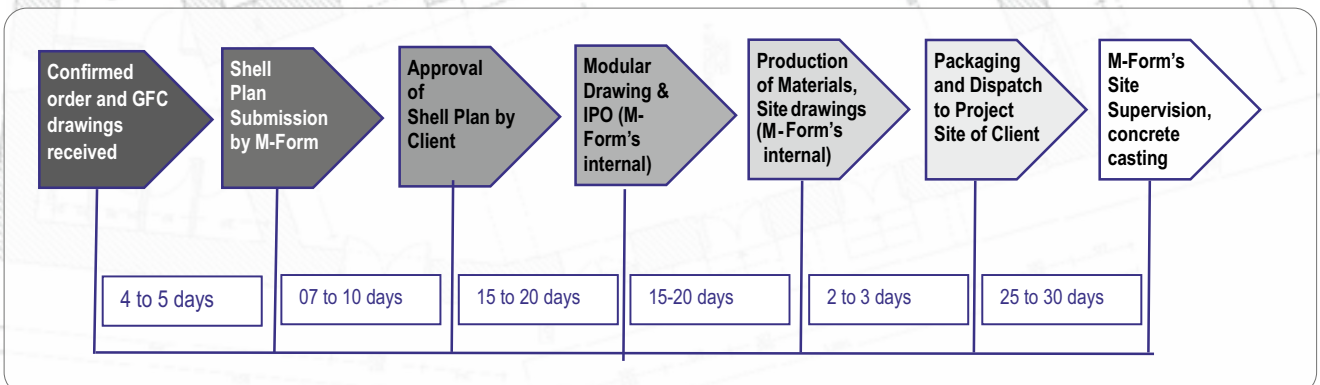
## 7 Day WORKING CYCLE



## TECHNICAL DATA

TECHNICAL PARAMETERS		
1	Grade of Aluminium Extrusions:	T6-6061/6063 Structural Grade Aluminium Alloy
2	Grade of Sheet (used in special members)	Grade - 5052/3105 (4mmThik)
3	Sheet Thickness	4 mm
4	Weight of Aluminium formwork assembly	20 to 23 kg/Sq.m depending on design of the structure
5	Weight of Steel Components	11 to 12 kg/Sq. Mtr depending on design of the structure
6	Standard Wall Panels Size	2050mm/2400mmX600mm (plus Rocker height 50mm)
7	Standard Deck / Slab panels Size	1200mm X 600 mm
8	No's of stiffeners in standard panels	9 No's horizontally + 4 No's vertically
9	Load Bearing Capacity of panels	60 kN
10	Width Platform Bracket	1000mm
11	Levels of Platform Bracket	2 levels
12	Quick Stripping system	Yes, Prop Head, Mid Beam detachable
14	No. of Pin & Wedges designed per Sq. Mtr	10 to 12 pairs based on design of structure
15	Additional to be provided	10% additional over 12 Pairs/Sq.m
16	No's of wall ties	Minimum 4 No's/Sq.m

## MILESTONES BEFORE FIRST CASTING





Beams



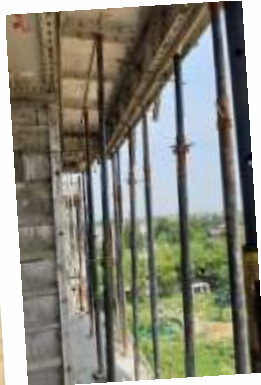
Wall (monolithic)



P.C. at Opening



Chajja



Balcony



Standalone Column



Platform Brackets





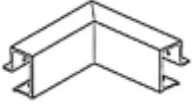







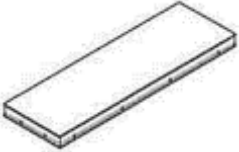


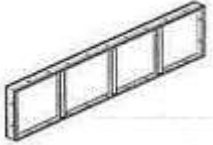



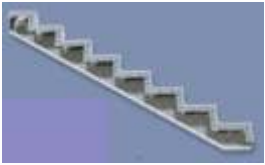
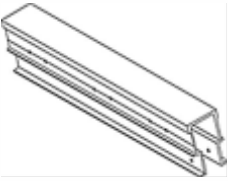
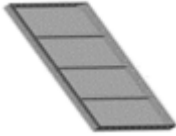




Staircases



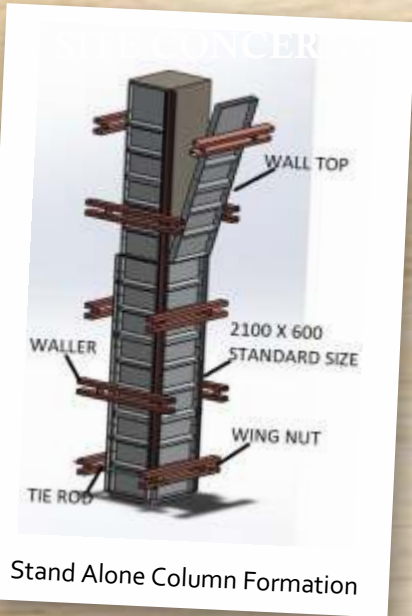
Standalone Walls



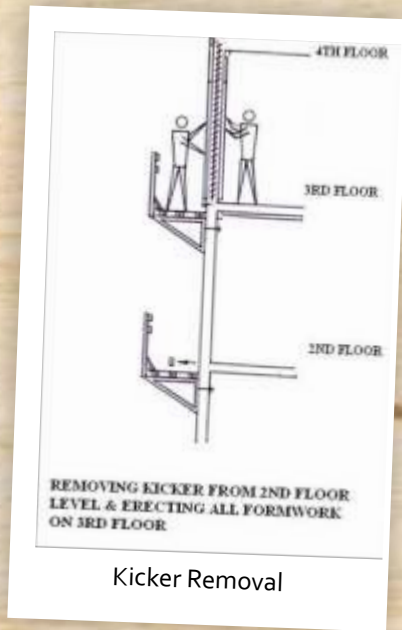
Slab

Product Description	Image	Product Code & Description	Image	Product Code & Description	Image
Standard Wall Panel.		Deck Prop Head		Soffit Corner (External)	
Top Panels for Walls		Beam Prop Head		Soffit Corner (Internal)	
Rocker		Beam Soffit Bulkhead		Soffit Length	
Kicker		Beam Soffit Panel		Plate Cover (in openings)	
External Corner		Beam Side Panel		Staircase triangular Panel	
Internal Corner		Beam Bar		Staircase Side	
Mid Beam		Deck Panel (Standard)		Tread & Riser	
End Beam		Deck Panel (Peripheral)		Channel Prop (in Balcony)	

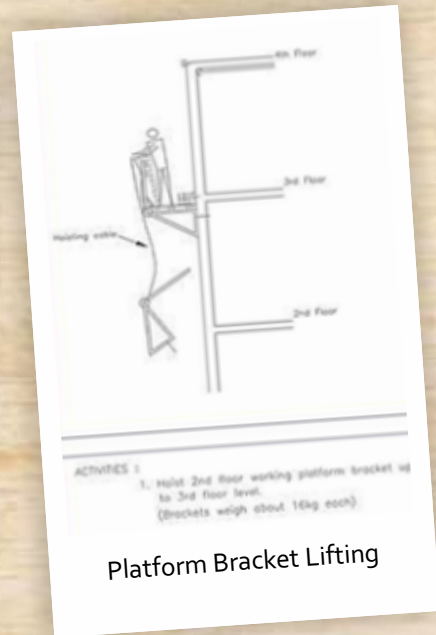
Product Code	Product Image	Image	Product Code	Product Image	Image
ACC001	Pin 50 MM		ACC013	Slab Attached Bracket 350X1000 mm	
ACC002	Long Pin 127 MM		ACC014	Elevator Bracket	
ACC003	Wedge		ACC015	TIE ROD 16MM φ	
ACC004	Dywidag Pin 250 mm		ACC016	Anchor Nut	
ACC005	Polythene Sleeve (Sheet size 8 ft X 4ft)		ACC017	Waler Bracket (German Clamp)	
ACC006	PVC Sleeve		ACC018	Kicker Bolt with Nut 16X80 mm	
ACC007	Polythene Roll ( 1 roll weighs 5kg)		ACC019	Rocker Bolt with Nut 16X30 mm	
ACC008	PVC PIPE (20 MMφ) 1 mtr		ACC020	Adjustable Prop	
ACC009	PVC Cone		ACC021	MS Waler	
ACC010	Wall Tie		TL001	Podge (Hole Baari)	
ACC011	Vertical Soldier 1 mtr.		TL002	Tie Puller	
ACC012	Wall Attached Bracket 600X1000 mm		TL003	Panel Puller	



Stand Alone Column Formation



Kicker Removal



Platform Bracket Lifting



Electrical boxes



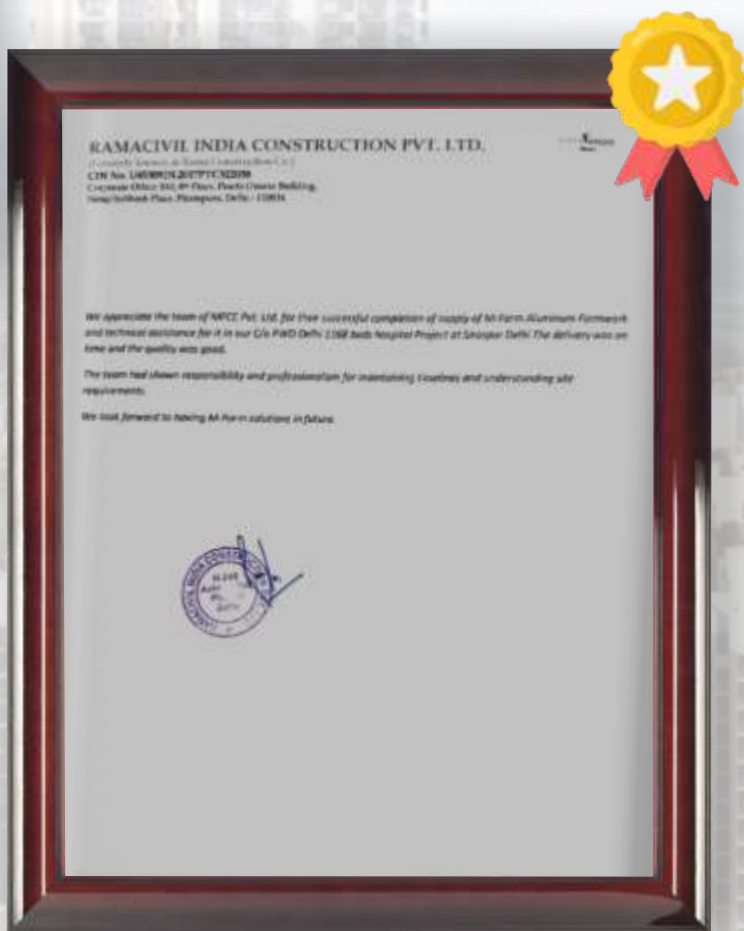
Oil Based Shuttering Oil needs to be applied before each casting



Profile Attached for Groove Forming



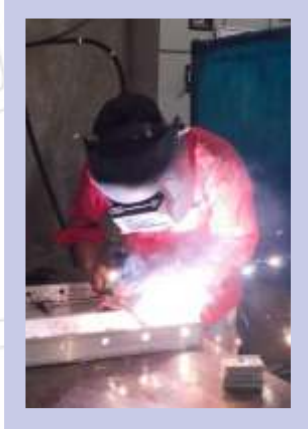
Grouting of Holes after removal of wall ties



# INSIDE OUR PLANTS



M FORM  
ALUMINIUM FORMWORK







## Consultancy:

Our Technical Sales staff will work with you to identify project requirements and challenges and to analyse solutions and planning. Entry at concept stage ensures the effectivity.

## Design Expertise:

Our experienced Engineering design team will materialise the concept into cost effective and safe formwork solutions, customised to the exact needs of the project. They will apply our design knowledge and experience for innovative, practical and cost effective solutions.

## Technical Advancements:

As we receive the GFC drawings from your end, our designers will overlay the Structural and Architectural drawings in order to prepare a Shell Plan to eliminate the gaps, if there is any, and to freeze the dimensions of every concrete feature of the structure. On receipt of approval on Shell Plan from your end, our designers start working on the modular/formwork assembly drawings. By Integrating 3D, CAD design throughout the business, coupled with in house design programs, they bring the structure come to life.

## Demonstration & Training

We provide mock up arrangements, allowing a more detailed understanding. We also offer hands on practical training in the safe and efficient use of our formwork solution, undertaken either at our demonstration facilities or on our customers' site ensuring they have all the knowledge they need to work safely with our equipment on site.

## On Site Technical Assistance:

Our Site Technicians can be hands on to provide practical guidance on how to read codes of each piece of components in the Site Drawings prepared by us, receiving the items on arrival at your site, identify best to utilise our equipment in a safe and efficient manner, assists site team of customer during erection, casting, stripping and shifting for achieving the desired casting cycle.



**Q: I have a single House. Can I use M-FORM?**

- Technically its possible. However, It would be more expensive than conventional formwork until the scope of repetition is less than 35 No's

**Q: How many repetitions are possible in M-FORM?**

- Water Cleaning and usage of Form Oil after each pour will yield 150-200 repetitions

**Q: Is framed structure possible for construction by using M-Form?**

- Technically its possible. However, most application of M-FORM is for Shell Structure (All Shear Wall structure), because the essence of M-FORM is to avoid secondary work including plaster. Framed structure (Column, Beam & Slab), if formed by M-FORM, will anyway need block work and plastering.

**Q: Do I get sufficiently skilled labour for M-FORM?**

- M-FORM is already pre-engineered and user friendly. Moreover, M-FORM provides Technical Assistance through Training, Site Drawings and experienced Technicians' Supervision. The customer needs to have a workforce of Skilled and Semiskilled labour in 40:60 ratio.

**Q: Is it possible to cast structures other than monolithically constructed buildings?**

- Forming of Stand alone Columns and walls are very much

**Q: Will Double Lacquering add life to panels and enhance finishing?**

- No. Lacquer was originally made for adding glaze to wooden show pieces/furniture. The purpose of Lacquering on Aluminium Panels is to protect it from ambient reactions during packing, transporting, storage and assembling work at Site. Once the panels comes in contact with concrete it's the Form oil but not Lacquer which plays the role of life to panels and good finish to concrete.

**Q: What to do with the M-FORM materials once I complete my project?**

- M-Form Materials can be (1) Re-used by re- engineering done by M\_FORM in your next project, (2) Can be sold out to other contractors (3) Can be scrapped with good salvage value or (4) Can be sold back to M-FORM with 30% return value under normal condition.

**Q: What is a Shell Plan? Who will approve it?**

- A Shell Plan is a drawing made by M-FORM Designers after overlaying your Architectural & Structural Drawings with mention of each dimension of each structural element. It would be approved by the authorized person from your side. This way the dimensions of the concrete structure to be form are freezed. Thus a Shell plan is not a formwork design plan but it is the basis on which the formwork design starts.

**Q: I have old stock of Aluminium Formwork of another brand. Can you assemble them with M-FORM for my next project?**

Yes, its possible. However, M-FORM needs to be provided with the design of Standard panels of your existing Aluminium Formwork so that the holes for Pins and the slots for wall ties on the frames of the panels can be taken care of accordingly.





**M FORM**  
**ALUMINIUM FORMWORK**



## CONTACT US



sales@mformindia.com



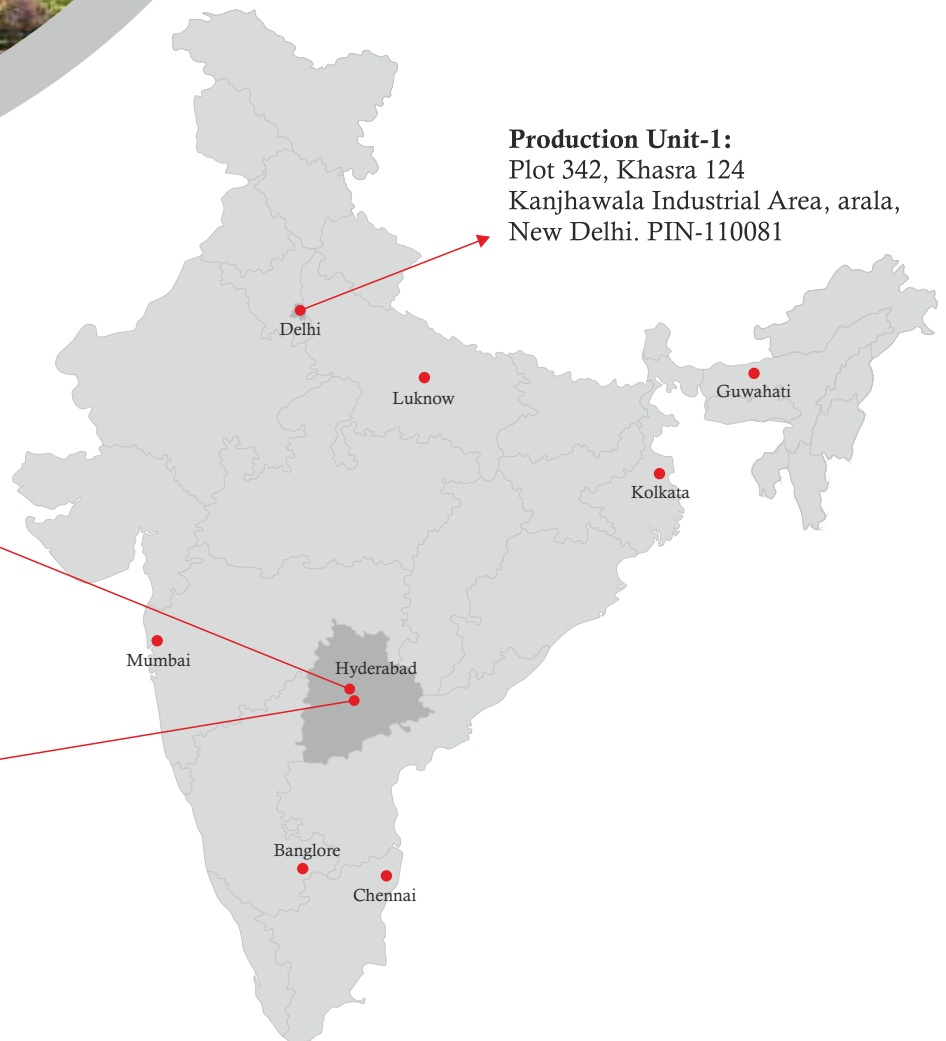
+ 91 9818007496, 9818008596, 9873584257

### Production Unit-2

Survey No.252/E, Annaram  
Village, Gummadidala Mandal,  
Sangareddy District, Telangana.  
PIN 500043

### Corporate Office Address:

HIG-41/1 Phase-VI,  
KPHB, Kukautpally,  
Hyderabad  
PIN- 500085



### Production Unit-1:

Plot 342, Khasra 124  
Kanjhawala Industrial Area, arala,  
New Delhi. PIN-110081

*On Time With Quality*

[www.mformindia.com](http://www.mformindia.com)